

iR Security Kit – A1P/A1U Installation Manual

When installing the iR Security Kit - A1P/A1U, follow the instructions given in this manual.

1	Package Check
---	----------------------

Open the package of iR Security Kit - A1P/A1U and check that the following items are enclosed:

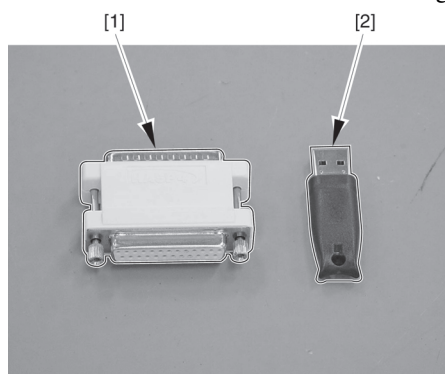


Fig. 1-1

- | | |
|--|-------------------------------------|
| [1] Protect key device - Parallel (for A1P) 1 pc. | [4] User's Guide 1 pc. |
| [2] Protect key device - USB (for A1U) 1 pc. | [5] Serial number label 1 pc. |
| [3] iR Series Security System Setup Tool
CD-ROM 1 pc. | |



About storing the protect key devices and CD-ROM after use

Instruct the user to store the protect key devices and iR Series Security System Setup Tool CD-ROM securely because they are necessary for enabling the Security Option again when the option is disabled by an operational error in Service mode or other. A protect key device is available only for a copier where the device was used once. Once a protect key device has been damaged by static electricity or lost, the Security Option can no longer be set. To prevent this problem, instruct the user to keep each protect key device in a conductive bag.



About handling the protect key devices

To protect the protect key devices from static electricity, note the following:

- When install the devices, wear a ground wrist strap. If no grounding facility is available, connect the ground terminal of the wrist strap to the frame of the copier.
 - Keep each protect key device in a conductive bag and take it out immediately before use.
 - Do not touch the connector terminals of a protect key device.
-

2 Preparation

2.1 Necessary Materials

a. Parallel connection

- Windows 95/98/NT/2000/XP personal computer (PC)
(A1U: Not supporting Windows 95/NT)
- IEEE 1284 parallel cable of 1.8 m or shorter

b. Network connection

- (iR C3200/C3200S/C3200N, S3200, CLC3200, imageRUNNER C3200: Network connection only)
- Windows 95/98/NT/2000/XP personal computer (PC)
(A1U: Not supporting Windows 95/NT)
- 10/100Base-T cross Ethernet cable

2.2 Connecting the Copier to PC

- 1) Turn off the copier power and PC power.
- 2) Disconnect the Ethernet cable, parallel cable, and modular cable connected to the copier.
- 3) Take the enclosed protect key device (parallel or USB) out of the conductive bag and connect it to the parallel or USB port of PC.
- 4) Connect the copier and PC with the prepared parallel cable or cross Ethernet cable.
- 5) Turn the PC power on.
- 6) Turn the copier power on.



- For iR C3200/C3200S/C3200N, S3200, CLC3200, imageRUNNER C3200

While holding down the 1 and 7 keys on the numeric keypad together, turn the copier power on. (Keep the numeric keys down for several seconds.) Power-on with the 1 and 7 keys down automatically sets the network connection of the copier.

(IP address: 172.16.1.100, subnet mask: 255.255.255.0)

- 7) For use through a network connection, set an appropriate network connection to enable communication between the copier and PC. If the network connection is changed, turn the PC power and copier power off and on.



- For iR C3200/C3200S/C3200N, S3200, CLC3200, imageRUNNER C3200

Set the IP address and subnet mask of PC.

(IP address: 172.16.1.10, subnet mask: 255.255.255.0)

2.3 Installing the Protect Key Device Driver

- 1) Insert the enclosed iR Series Security System Setup CD-ROM into the PC CD-ROM drive and double-click the hdd32.exe file on the CD-ROM.
(IRSEC : \English\Vxxxx(version)\hdd32.exe)
- 2) Select the language and click OK.

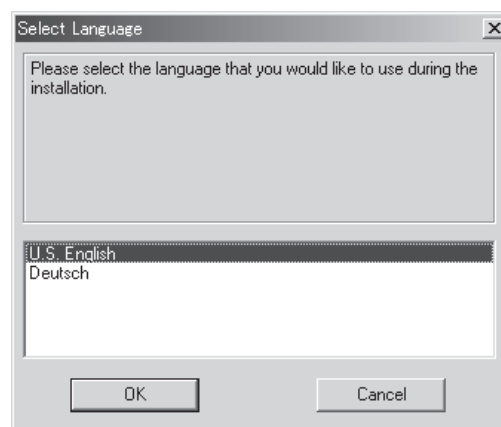


Fig. 2-1

- 3) Click Next.



Fig. 2-2

4) Click Finish to complete the installation.

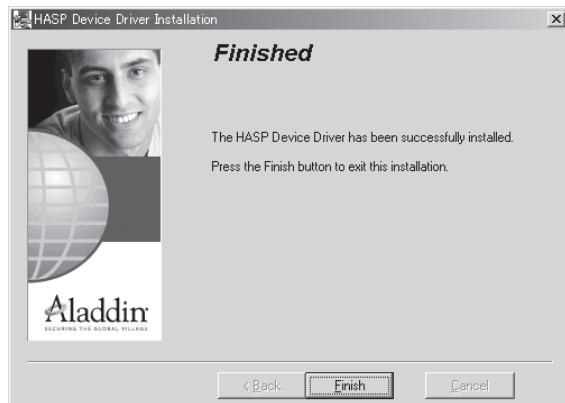


Fig. 2-3

2.4 Installing the iR Series Security System Setup Tool

- 1) Insert the enclosed iR Series Security System Setup Tool CD-ROM into the PC CD-ROM drive.
- 2) Double-click the Setup.exe file on the CD-ROM.
(IRSEC : \English\Vxxxx(version)\Setup.exe)
- 3) Click OK.

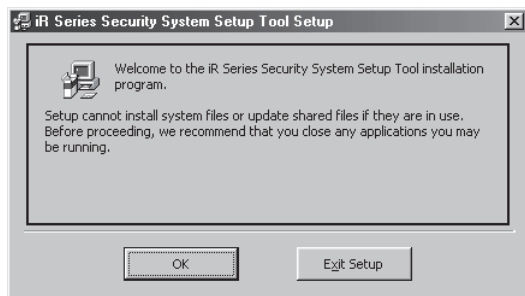


Fig. 2-4

4) Click the PC icon.

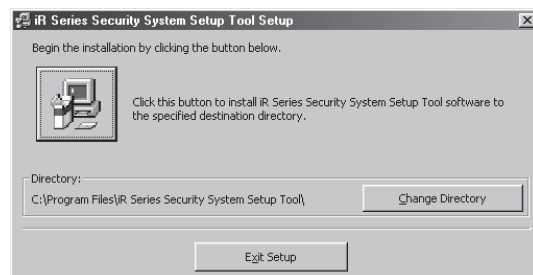


Fig. 2-5

5) Click Continue.

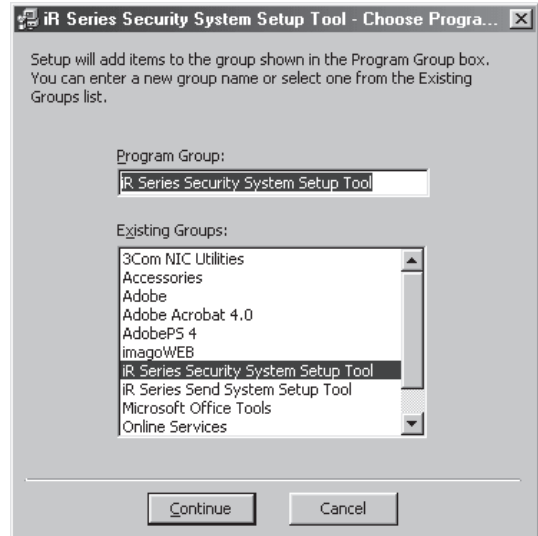


Fig. 2-6

6) Click Finish to complete the installation.

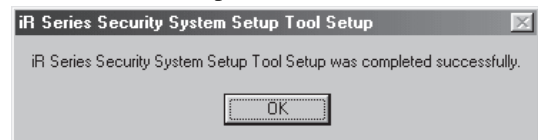


Fig. 2-7

3	Security Option Addition Procedure
---	---

3.1 Adding the Security Option

- 1) Enter Service mode and press COPIER - Option - FUNCTIN - DOWNLOAD - OK to make the copier ready for download.



Note that the Security Option cannot be added in Download mode of Safe mode (copier power-on with the 2 and 8 keys down).

- 2) Activate the iR Series Security System Startup Tool from PC.
- 3) Check that the type of the connected protect key device is bi-Centronics for A1P or USB for A1U. Then click OK.

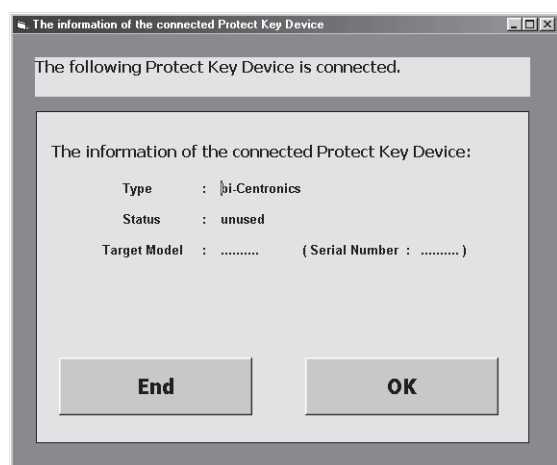


Fig. 3-1

- 4) For parallel connection, select bi-Centronics and click OK. For network connection, select Network, enter the IP address of the copier, and click OK.

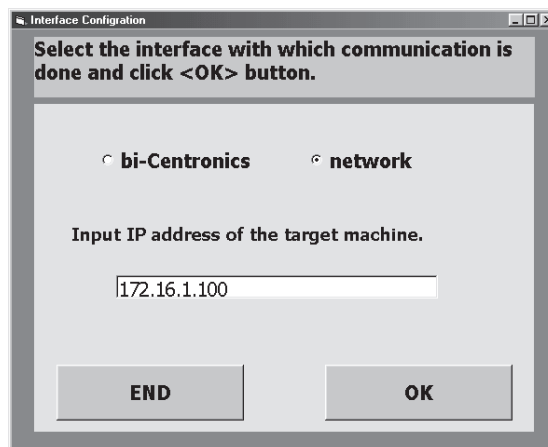


Fig. 3-2

- 5) Click OK.



Fig. 3-3

- 6) Click OK.

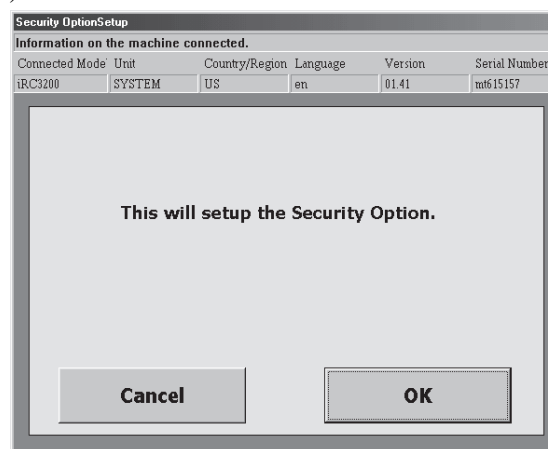


Fig. 3-4

7) Click END.

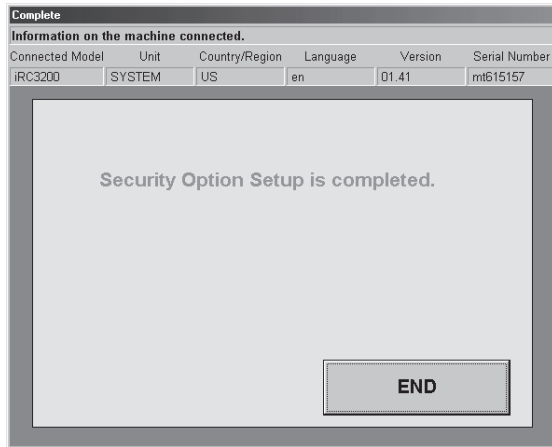


Fig. 3-5

8) Click OK to finish adding the Security Option.

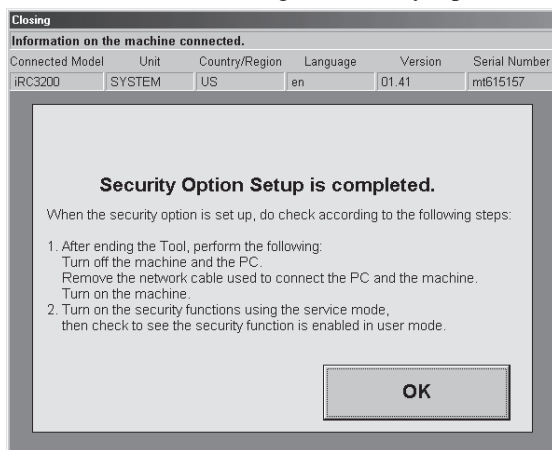


Fig. 3-6

9) Turn the copier power off and on.

3.2 Setting Service Mode and User Mode

The Security Option is of the two types below. This option is enabled only after setting both in Service Mode and User Mode.

- Hard Disk Data Complete Erase
- Job Log Display

The setting procedure is as follows:

1) Check the user request and set each item in Service Mode accordingly.

After the following setting, choices for the Security Option are displayed in User Mode.



- For iR C3200/C3200S/C3200N, S3200, CLC3200, imageRUNNER C3200

The items are displayed in Level-2 Service Mode.

For Level-2 Service Mode, enter the initial screen of ordinary Service Mode (User Mode key + 2, or 8 + User Mode key) first. Then press the User Mode key and 2 sequentially.

• Hard Disk Data Complete Erase

<Function>

Set whether or not to delete data completely from the hard disk by overwriting 0 or random data to the file division at the logical file deletion timing (management data deletion timing).

<Service Mode items>

COPIER > Option > USER > HDCR-DSP

<Setting range/Operation>

0: Do not display in User Mode/Do not erase data (Default)

1: Display in User Mode/Write 0 data once

2: Display in User Mode/Write random data once

3: Display in User Mode/Write random data three times

Change the set value from 0 to 1, 2, or 3.



The greater the set value, the higher the data security on the hard disk.

- Job Log Display

<Function>

Set whether or not to display the history of copying, fax communication, and printing.

<Service Mode items>

COPIER > Option > USER > LGSW-DSP

<Setting range/Operation>

0: Do not display in User Mode (Default)

1: Display in User Mode

Change the set value from 0 to 1.

2) Once you have entered System Settings in User Mode, the Hard Disk Data Complete Erase and Job Log Display buttons. Set the buttons to ON or OFF according to the user request.

3.3 After Work

- 1) Check the serial number of the copier and turn the power off.
- 2) Remove the protect key device from PC.
- 3) Turn the PC power off.
- 4) Disconnect the cross Ethernet cable between the copier and PC.
- 5) Connect the Ethernet cable, parallel cable, and modular cable disconnected before work.
- 6) If the network connection of the copier has been changed, reset the connection to the original settings and turn the power off and on.
- 7) Enter the serial number of the copier into the enclosed serial number label and stick the label to the protect key device (parallel or USB).

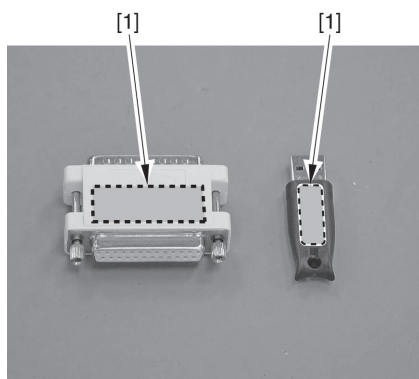


Fig. 3-7

- 8) Put the protect key device in a conductive bag and pass it to the user with the iR Series Security System Setup Tool CD-ROM.

Instruct the user to store them securely.